

Used machines offer

HAKO Citymaster 2000 E5 3B - 3 brush sweeper, 1

Offer number: UM3437010

 **aebi schmidt**
group

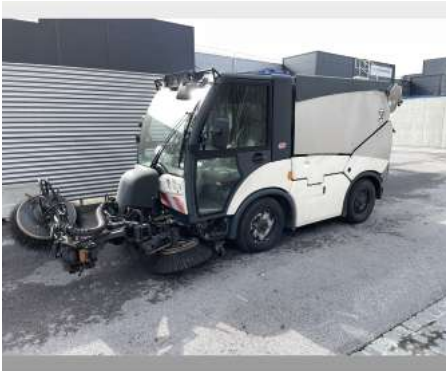


Mat.-Nr.: 1378575-4
Year of manufacture: 2011
Serialnumber: WMU2X56E5BWL00053
Running hours: 4,729 h
Mileage: 37,090 km
Condition: Class 3
Location: Austria
6401 Inzing / Tirol

Price:

The Hako Citymaster 2000 has been designed for use all year round and sets new standards in terms of use and driver comfort. With heated front windscreen, as standard, for cold days or the connectible four wheel steering in working mode, the Hako Citymaster 2000 leaves nothing to the desired. With a hopper volume of 1.85 m³ the machine is able to achieve long usage times both in narrow, restricted areas as well as on open spaces and thus increases the effectiveness

Gallery





Equipment

Engine

Water-cooled large size industrial turbo diesel engine, VW 2.0 I, L-4V-CR-DPF, 75.0 kW, (102 hp) at 3,000 rpm. With maintenance-free soot particulate filter in a closed system. 4 cylinder 4 stroke engine. Injection pump system, water cooling, working revolutions 1900 - 2300 rpm. Regulation of working revolutions via TIP UP-DOWN switch. Emission levels according to Euro 5. Fuel tank 50 litres.

Drive transmission

	Hydrostatic drive with electronic control. 2 drive stages to be switched under load, differential lock (acting on rear axle). Drive control with automatic load regulation in transport and work mode or specified engine revolutions (noise limitation).
Drive performance	
	Transport mode 0-50 km/h, working mode 0-15 km/h, reverse transport mode 0-25 km/h, reverse working mode 0-15 km/h. Optional winter maintenance up to 45 km/h.
Chassis and steering	
	Welded frame, dropped in the front part and angled, rigid axles guided at longitudinal swinging arms and Panhard rod, helical spring system, additional rubber springs and hydraulic shock absorbers. Hydrostatic front wheel steering with connectible four wheel steering.
Tyres Standard	
	4 wheels on 6J 15 H2 ET 50 rims, tyres 215/70 R 15 C. Special tyres 255/75 R15 available.
Brakes	
	Hydraulic dual circuit brake system with servobrake and load-dependent regulation of braking power on front and rear axle. Tandem vacuum servobrake, automatic brake re-adjustment, mechanical parking brake acting on rear axle.
Cabin	
	2-seat full comfort cabin in space frame design with air[1]sprung comfort driver's seat, adjustable to the driver's weight. Ergonomic arrangement of all operational elements. Warm water heating and heated, tinted wrap-around windscreen, made of safety glass, fitted as standard large glazed doors with sliding windows and large viewing window in the bottom part, folding wing mirrors adjustable from inside; air conditioning system optional.
Sweeping unit	
	1.99 m ³ stainless steel tank, hydraulic tipping to 45°, emptying height 1,450 mm. Quick exchange front mounted sweeper unit in view of the driver. Hydraulically drive plate brushes, brush speed and working width adjustable from the driver's seat, side and front collision protection.
Fan	
	High-performance multi-bladed radial fan, rubber-cushioned and sound-proofed.
Power lift/attachments	
	Front power lift with 2 double-acting hydraulic cylinder.
Dimensions and weights CM 2000 2B/CM 2000 3B	
	Maximum sweeping width mm 2.500/2.600

Contact

Artur Maciejewski
Used Machines Sales Manager



© Aebi Schmidt Group
www.aebi-schmidt.com

Aebi Schmidt Holding AG
CH-8050 Zurich, Switzerland

All rights reserved. Technical data is subject to change.
Illustrations are not binding. Errors and amendments excepted.

Document created on 18 MAR 2024

