



 **aebi schmidt**
group

Remote Diagnostics

Maximum machine uptime and longer service life



In a world where responsibility for keeping roads and cities accessible and safe, is ever-increasing, finding sustainable solutions is crucial. With our Remote Diagnostics solution, we enable you to identify faults faster and respond faster, minimising costly downtime. By ensuring regular and timely maintenance at the same time, together we strive for optimal machine performance.

Highlights

- **Faults and alerts** are **actively** reported to your maintenance partner so that action can be taken before serious problems arise.
- **Ability to diagnose problems remotely**, reducing the need for physical intervention and saving valuable time. Necessary parts can be ordered faster.
- **Support in maintenance planning**, ensuring optimum use of available workshop capacity and machine uptime. Parts and materials can be ordered on time.
- **Optimisation of maintenance plans and costs** based on actual machine condition and maintenance history.
- **Optimise vehicle utilisation** by combining operational data and machine performance.
- **Standard part of IntelliOPS**, the Aebi Schmidt platform for your connected fleet.

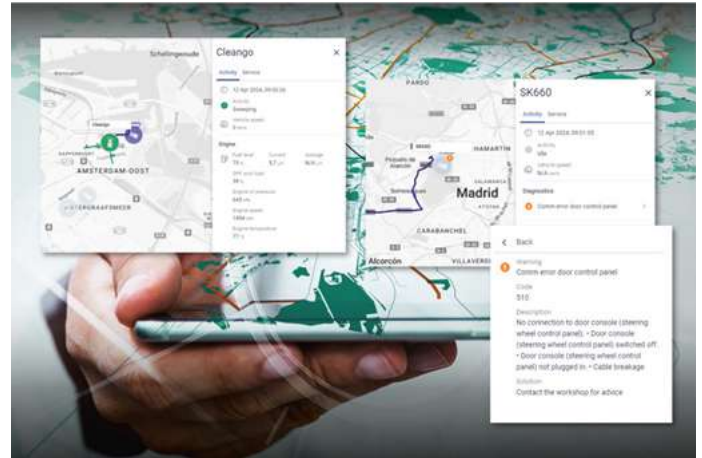
Your benefits

- **Fast and proactive identification of breakdowns**, minimising costly downtime.
- **Increased operational efficiency** through the ability to diagnose and resolve problems remotely.
- **Reduced downtime** through faster delivery of needed parts.
- **Early warnings** of potential failures provide peace of mind and prevent unexpected costs.
- **Maintenance planning** of the entire fleet is **up-to-date**.
- Timely maintenance ensures optimal machine performance and **increases running hours** over the machine's lifetime.
- **Sustainable approach** to fleet management with increased control of combustion engine emission values, contributing to the protection of people, the environment and the climate.

Features

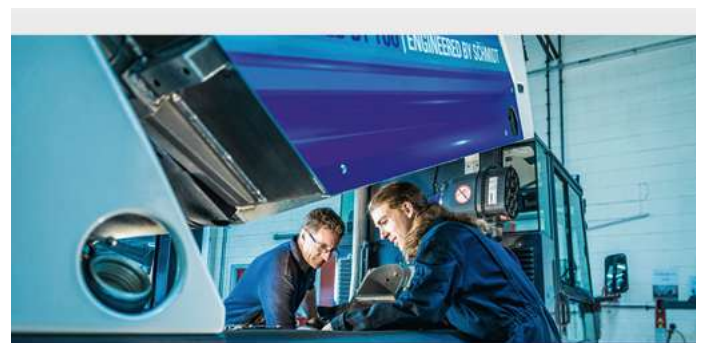
Remote monitoring of machine performance

Remote monitoring continuously checks the condition of machines in the field. This data is made visible in the IntelliOPS platform for fleet and operational management. In addition to information such as the remaining range of the machine, temperature, particulate filter status, number of engine running hours or, for example, battery charge status are transmitted. Any fault messages are transmitted with action advice. Remote diagnosis of any problems reduces the need for physical intervention and saves valuable time. The maintenance party can take action before serious problems arise and unexpectedly higher costs for repairs.

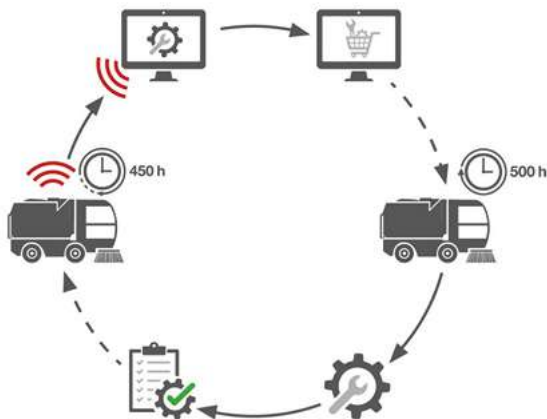


Service planning support

Regular maintenance promotes the optimal performance of machines and extends their lifetime. You or your maintenance partner receive email notifications for upcoming, currently required or missed maintenance. These notifications are based on maintenance messages from the machine itself or on the schedule based on the engine's actual running hours. By having a clear view of the maintenance schedule, optimum use can be made of available workshop capacity and machine uptime. Parts and materials can be ordered in good time. The maintenance planning for different machines is always up to date and is clearly displayed in one platform.



Machine type	Linked Serviceplan	Engine run hours	Next maintenance	Broadcast list
Sweeper	500 - 10000 uur	4483	4500 hours • Due	Onderhoudsnotificaties
Sweeper	500 - 10000 uur	4225	4000 hours • Overdue	Onderhoudsnotificaties



aebi schmidt
IntelliOPS

Dear Sir / Madam,

Based on the service schedule as set in IntelliOPS, the following machine is overdue for maintenance.

Cleango - A00530
Serial: WSVS261P2H0000000
Company: Big City Cleaning Company

Current operating hours: 4102

Regards,
Aebi Schmidt



© Aebi Schmidt Group | www.aebi-schmidt.com

Aebi Schmidt Holding AG | CH-8050 Zurich, Switzerland

All rights reserved. Technical data is subject to change.
Illustrations are not binding. Errors and amendments excepted.

Document created on
30 SEP 2024

aebi schmidt
group