

IntelliOPS Street Cleaning

Operations & Fleet Management System



The professional and continuous use of data and digital applications increases your performance and efficiency, saves fuel and material, leads to lower CO₂-emissions and improves safety. Thanks to the secure Aebi Schmidt IntelliOPS platform, your vehicle operating data is accessible at all times. Let our digital solutions help you support and streamline your day-to-day operations.

Highlights

- **Plan** your operations more efficiently by creating routes or actions and assigning them to individual drivers or vehicles.
- **Monitor** your street cleaning operations from the workplace and influence them in real time.
- **Document** your street cleaning activities in line with legal requirements where necessary.
- **Create** visually appealing **reports** to the management team, the public, sub-contractors or other stakeholders.
- **Optimise** and **automate** your processes and procedures.
- **Monitor** your machine status remotely and get **automated notifications and alerts** for anomalies or potential failures.
- **Take advantage of maintenance planning support** to ensure optimum utilisation of available workshop capacity and machine uptime.

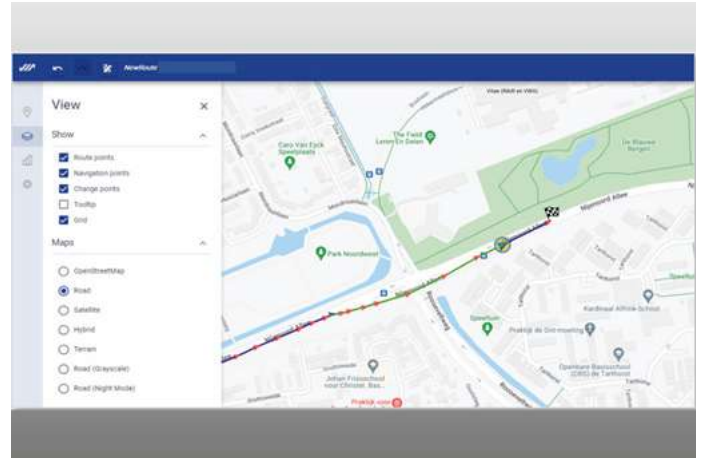
Your benefits

- **Swift performance evaluation.** Track your vehicles on a customisable map and intervene in the process remotely if needed.
- **Increase performance.** Gain clear insight into your vehicle activities and status by analysing detailed reports on productivity, activity and speed.
- **Increase efficiency.** Make key operational processes –especially route planning and optimisation –more efficient by comparing and fine-tuning routes.
- **Reduce costs.** Optimise the use of your resources and save fuel by analysing the energy consumption statistics.
- **Legal compliance.** Proof of sweeping activities without paper-based effort.
- **Minimise costly downtimes** by monitoring your machines, reacting to potential breakdowns at an early stage and scheduling maintenance work in good time.

Features

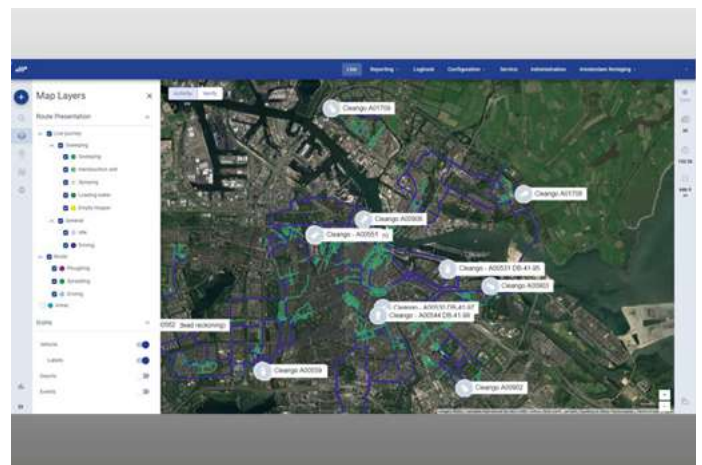
Module: Route Manager

With the module Route Manager routes can be created and modified. Routes can be recorded with our vehicles or new routes can be drawn completely online by using the drag and drop function. This saves time and reduces your CO₂-emissions. If your vehicle is connected to the internet, **your routes can be sent over the air** to the control panel in the vehicle. With the Driver Feedback functionality, a driver can provide feedback on the route and/or situation during his route. This feedback becomes immediately visible in IntelliOPS for the coordinator.



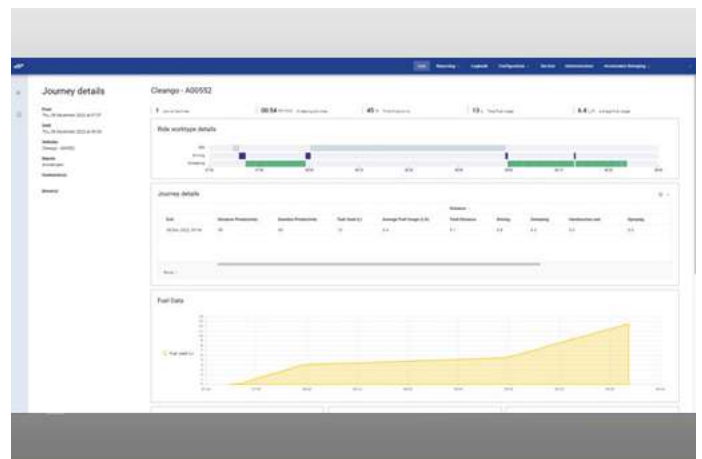
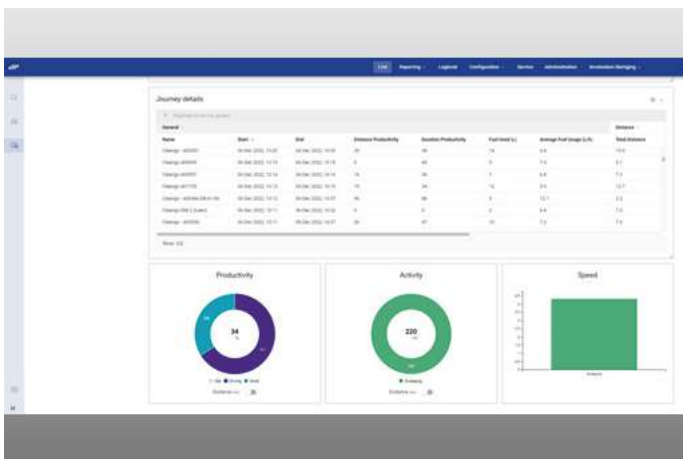
Module: Monitoring

The module Monitoring gives you **quick real-time insight** into the activities and status of your vehicles on customisable maps with several predefined layouts, adjustable filters and personal settings. You can instantly see which sweepers have been operational, when they started, how long they are running, the speed and when they returned to the depot.




Module: Analysis & Reporting

Check and improve your operational efficiency by analysing detailed reports on productivity, activity and speed. **Analyse energy consumption statistics** and refine or adjust your processes accordingly. You can export daily, weekly, monthly or seasonal reports to Adobe Acrobat and Microsoft Excel.



Module: Maintenance

Quickly identify and respond to faults, **minimising costly downtime** with remote diagnostics. The dashboard displays automated notifications and alerts for anomalies or potential failures, so that action can be taken before serious problems arise. Proactive remote diagnosis of problems reduces the need for physical intervention and saves valuable time.



We know how important it is that your machines and equipment are always ready to deploy. Get in touch with us about our range of tailored services and original spare parts.

Timely maintenance ensures optimal machine performance and extends machine life. Remote diagnostics helps plan maintenance based on maintenance history and the actual condition of the machine. This ensures optimum use of available workshop capacity and machine uptime. Parts and materials can be ordered in a timely manner.

Packages & Modules

Create the package of digital solutions that best suits your needs. Here's the detailed overview of the features.

Data & Connectivity	
Data & Connectivity	Modem per vehicle
	Data Transfer and Cloud Storage
	Data Exchange API, supply data to third party system (EN15430)

Route Manager	
Route Manager	Create & fine-tune routes and areas online
	Maintain routes and incorporate temporary deviations
	Send routes by air to vehicle ¹
	Driver Messages - reports situations that need attention ²
	Navigation system for driving complex routes

Asset Management	
Asset Management	Overview of all equipment and driver related information per depot
	Assign depots and drivers to machines
	Manage users and their permissions

Monitoring	
Monitoring	Get real-time list & map view of vehicle activities & status
	Access live weather data
	Visualize real-time activity such as driving, sweeping, spraying etc.
	Customizable maps: several predefined layouts, adjustable filters, statistics, personal settings, etc.

Analysis & Reporting	
Analysis & Reporting	Analyze detailed reports on productivity, activity and speed
	Generate daily, weekly, monthly or seasonal reports
	Analyze energy consumption statistics
	Export to Adobe Acrobat and Microsoft Excel (pdf, xlsx, csv)

Maintenance	
Maintenance	Remote monitoring of the machine performance
	Create maintenance plans per machine
	Set maintenance alerts to pre-defined recipients

¹ only available with Data & Connectivity

² only available in combination with a Summer Service Licence



Aebi Schmidt Holding AG
 Leutschenbachstrasse 52
 CH-8050 Zurich, Switzerland
 Phone: +41 44 308 58 00
 www.aebi-schmidt.com

© Aebi Schmidt Group
 All rights reserved.
 Technical data is subject to change.
 Illustrations are not binding.
 Errors and amendments excepted.

Document created on 9 MAR 2025

