



elp
a brand of aebi schmidt

Harness Series II

Vehicle attachment



The ELP Harness Series II features a completely detachable frontal harness with a hydraulic attachment for quick plough removal. Its candy cane style attachment ensures easy install and removal of the front plough. The integrated side wing attachment allows for seamless installation and removal of all snow removal equipment, including the plough, harness, and wing, in one go.

Highlights

- **Quick installation:** Attaches and detaches in minutes, saving valuable time.
- **Easy assembly:** No bolts needed; everything is held in place using pins.
- **Solo operation:** The operator can install it without help, enhancing efficiency and convenience
- **Flexibility:** Can be fitted with all types of reversible and one-way ploughs.

Your benefits

- **Unobtrusive design:** No component remains on the truck except for the integrated front base plate, maintaining the truck's original look.
- **Simplified operation:** The same cylinder is used to raise the snowplough and attach the harness, reducing complexity.
- **Convenient storage:** The harness sits on legs when removed, ensuring it's always ready to be reinstalled quickly.
- **Unrestricted access:** Allows the truck's engine compartment hood to be opened without removing the harness or side wing, facilitating maintenance and access to engine components.

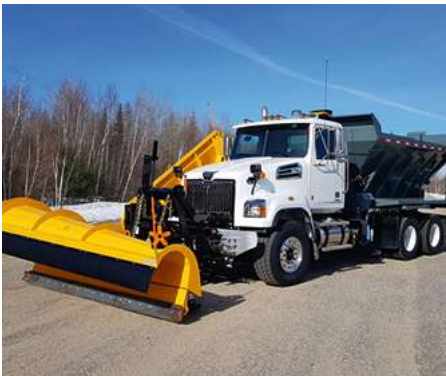
Performance features

Robust design

The support structure is made of $\frac{3}{4}$ " steel, thick, welded to the mounting plates and bolted to the truck chassis and provided with 6 coupling points. The greasable articulated frame is equipped with a $2\frac{1}{2}$ " double action cylinder, dia. with a $1\frac{1}{2}$ " shank, nitrided diameter intended for lifting the snow plough and coupling. The front column for operating the front slide of the side wing system is made of a $6\frac{5}{8}$ in. truss, x $3\frac{7}{8}$ in. C-shaped profile into which the $\frac{1}{2}$ " slide plate is inserted. The upper part of the articulated frame is equipped with a greasable pivot and 3 integrated grapples allowing the easy fixing and adjustment of the snow plough lifting chains. The column coupling allows the hood to be opened at any time, without requiring hydraulic force. The front column assembly provides for free floating of the side wing over a travel of at least 10 in. in height.



Gallery



Related products

Series 632

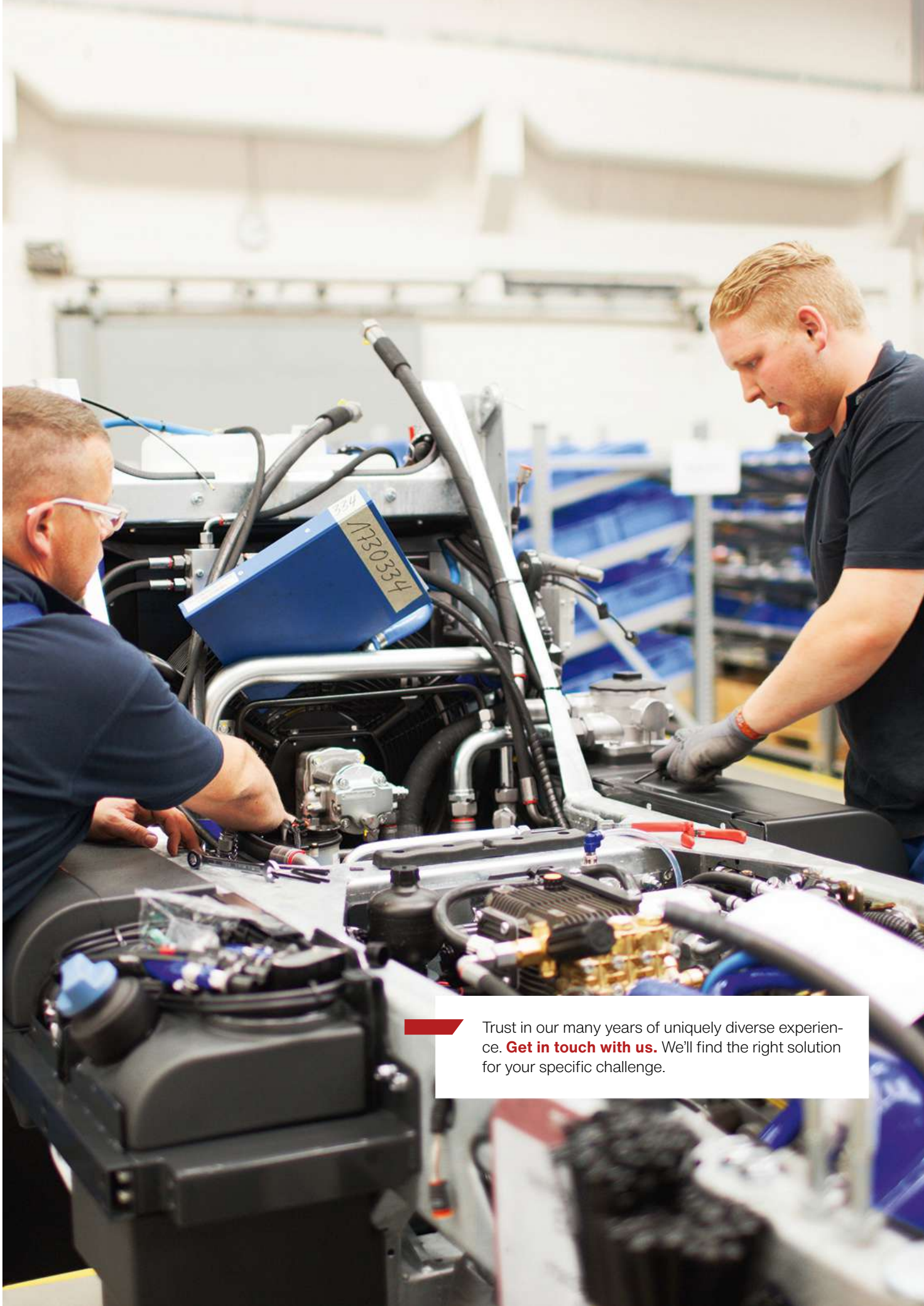
Snow plough



Series 672

Snow plough





Trust in our many years of uniquely diverse experience. **Get in touch with us.** We'll find the right solution for your specific challenge.

Technical data

Weights

Weight (incl. base tyres; without attachment)

647 kg



Aebi Schmidt Holding AG
Leutschenbachstrasse 52
CH-8050 Zurich, Switzerland
Phone: +41 44 308 58 00
www.aebi-schmidt.com

© Aebi Schmidt Group
All rights reserved.
Technical data is subject to change.
Illustrations are not binding.
Errors and amendments excepted.

Document created on 9 MAR 2025

