



arctic
a brand of aebi schmidt

HMK

Snow plough



The Arctic HMK is a combination of a high throwing inclined crab and a modern main crab with spring steel elements. The flexible blade closely follows the road surface and produces an extremely clean working footprint. The wing design throws snow high and far over high snow banks. The plough is designed for arctic regions with high snowfall. The blade of the plough is designed to increase the thickness of the material where the greatest forces are applied.

Highlights

- The 75 degree blade angle is perfect for clearing snow and ice without damaging road markings or the road surface.
- In a high-speed snow plow, the wing works well and extra snow jets don't obstruct the driver's view, thanks to the 42-degree turning angle and deep wing design.
- Cleaning the slush with a double blade (T2) produces a cleaning result comparable to brushing. The T2 twin-canister top cleaning result saving time and fuel.

Your benefits

- Designed to last: low maintenance thanks to modern components, intelligent solutions and special treatment of parts.
- Cost-effective snow ploughing: an aggressive ploughing angle combined with good ejection characteristics reduce costs.
- Operator comfort: the iFlex suspension blade reduces noise pollution and increases operator comfort.

We know how important it is that your machines and equipment are always ready to deploy. **Get in touch with us** about our range of tailored services and original spare parts.





Using digital solutions to monitor, control and optimise your operations? Saving fuel and resources? With reduced CO₂ emissions and increased security? **Get in touch with us.** We'll make it work.

Performance features

Plough wing

The robust HMK snow plough wing is made of strong steel with good chemical and corrosion resistance and excellent abrasion and wear characteristics. Together with ultra-strong steel framing, the plough wing is resistant to extreme longitudinal and lateral forces, creating a major safety factor and long product lifecycle. The flexible plough blade consists of 4-5 sections which follow the road surface individually, ensuring a perfect cleaning result.



Second cutting edge T2

The T2 second cutting edge is designed for highly efficient wet snow and slush removal. It is activated with double function hydraulic cylinders and follows the road surface in addition to the main cutting edge. The T2 is divided into sections which can follow the road surface individually, with a perfect finishing result, which significantly reduces the need for salt to melt the rest of the snow. The T2 cutting edge pressure is factory-adjusted so the driver can focus on working at any speed, without worrying about raising the main cutting edge.

Override safety system with iFlex

The iFlex blade components work as override safety device. Made from polyurethane with a longitudinal stretch ratio of 300%, the components bend backwards and lift the plough slightly, forming an angle to by-pass an obstacle, before returning back to an aggressive attack angle. All these movements occur without need of plough support, and the iFlex is completely maintenance free.

Silent ploughing

The iFlex flexible blade enables clean and quiet ploughing, reducing environmental noise in residential areas and allowing work to be carried out at night without disturbance.

Lifting device

The HMK's lifting device has a parallelogram design with vertical, horizontal and cross supports. All joints have bronze bearings with grease nipples and black nitrated pin and are 35 mm thick for extra strength and a longer working life. The plough has one powerful lifting cylinder and two synchronized swiveling cylinders, with safety valve. The swiveling angle of the plough can be adjusted steplessly during snow ploughing. The whole lifting device acts as a safety device in the event of an accident by absorbing the impact, thereby protecting the road maintenance truck.

Hydraulic swivelling system

The plough wing turns 42° left and right with the help of two double-acting cylinders which have connection points to the power frame at the bottom of the wing. This provides the best pushing force while maintaining the stability of the snow plough in use.



Kerb stone protectors

The HMK has rubber kerb stone protectors both left and right, helping it to operate near guard rails on highways without risk of damage.

Snow visor

The snow visor is made from robust and flexible polyurethane and continues the wing cylinder shape. It helps to roll snow inside the wing and eject it fast using aerodynamic forces. This prevents snow obscuring the driver's windscreen and mirrors, making ploughing safe and comfortable. A stainless steel snow handling plate improves snow rotation in the wing still further to keep it clear.

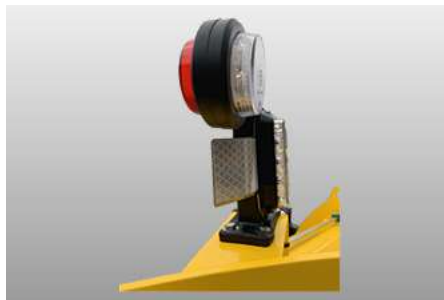


Mounting plates

The HMK has a variety of different attachment plates for different markets so that it can operate effectively with a wide variety of trucks, tractors, and wheel loaders.

Accessories

- T2 double blade system
- Wear disk support
- Gel filled wheel set
- Steel blade set
- Hard metal blade set
- LED lights with reflectors



Related products

RMT

Road maintenance truck



SHJ

Snow plough



AMS

Snow plough





Trust in our many years of uniquely diverse experience. **Get in touch with us.** We'll find the right solution for your specific challenge.

Technical data

	HMK 3700	HMK 4200
Construction		
Number of blades	4	5
Attack angle of the blade	75°	75°
Swiveling angle	42° - 0° - 42°	42° - 0° - 42°
Dimensions		
Plough height right	1,580 mm	1,650 mm
Plough height left	1,080 mm	1,080 mm
Clearing width	3,180 mm at 42°	3,117 mm at 42° 4,208 mm at 42°
Transport width	3,180 mm at 42°	3,333 mm at 42°
Weights		
Approx. weight with steel cutting edges	950 kg	1,060 kg



© Aebi Schmidt Group
www.aebi-schmidt.com

Aebi Schmidt Holding AG
CH-8050 Zurich, Switzerland

All rights reserved. Technical data is subject to change.
Illustrations are not binding. Errors and amendments excepted.

Document created on 9 JUN 2024

