



 **schmidt**  
a brand of aebi schmidt

# Tarron HP

Snow plough



The Tarron HP is a multi-blade high-performance snow plough ideally suited for use on motorways and extra-wide clearing operations in medium snow depths. Its multi-blade system guarantees excellent clearing quality over a width of 4,415 mm with blades that adapt perfectly to the road profile. The Tarron HP is suitable for mounting on trucks from 18 tonnes upwards.

## Highlights

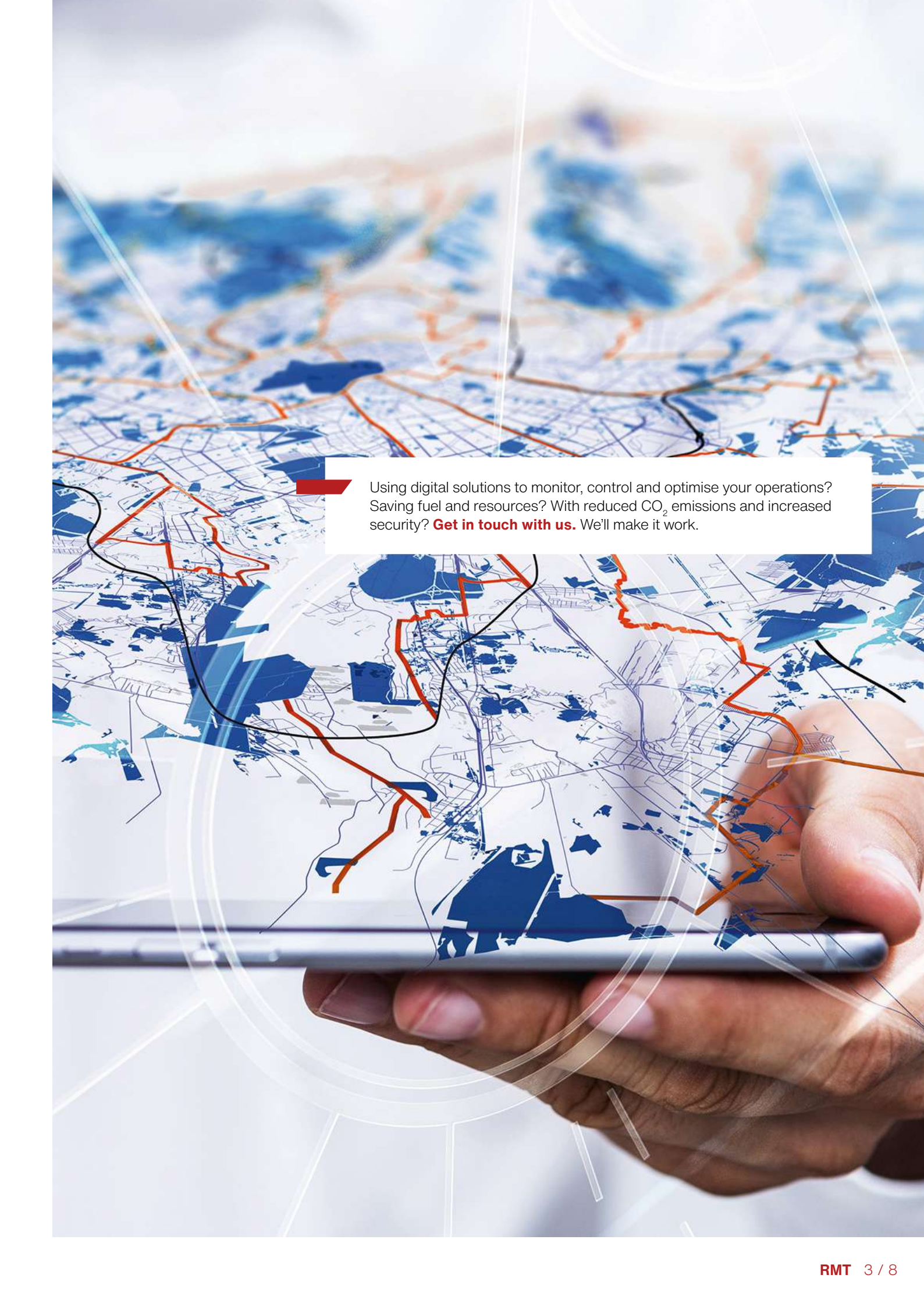
- **Multi-blade** system
- Efficient performance on **motorways** and in **extra-wide clearing operations**
- Snow clearing at **different angles**

## Your benefits

- **Clean clearing results** even at high speeds
- **Blade segments automatically adjust** to the unevenness of the road surface
- **Weight optimised snow plough** to minimise front axle load

We know how important it is that your machines and equipment are always ready to deploy. **Get in touch with us** about our range of tailored services and original spare parts.





Using digital solutions to monitor, control and optimise your operations? Saving fuel and resources? With reduced CO<sub>2</sub> emissions and increased security? **Get in touch with us.** We'll make it work.

## Performance features

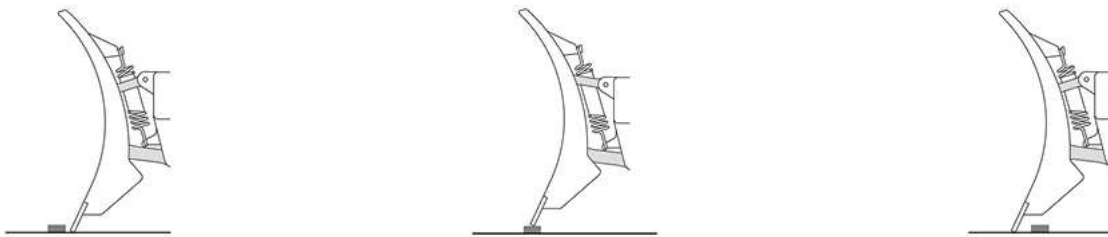
### Plough blade

Due to their individual suspension, the four blade segments adapt optimally to the road profile and always remain in the clearing position, leading to a clean clearing result even at high speeds. Pre-tensioned plough blades allow aggressive snow clearing operation and make the snow removal more efficient. Both in transport and clearing position, the left outer blade can be folded in hydraulically, minimising the clearance width.



### Override security system

Thanks to the maintenance-free override security system with plough blades guided on swing linking arms, ground obstacles are safely driven over without causing any damage.



### Cutting edges

#### Steel cutting edge (S)

A multi-purpose, cost optimised solution for aggressive clearing of hard and/or compact snow. Steel cutting edges are resistant to bending and twisting, giving a clean result.

#### Combi cutting edge (size 36 and 50) (C36 /C50)

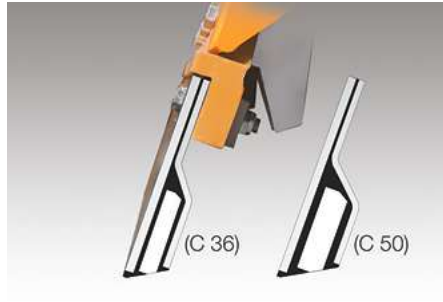
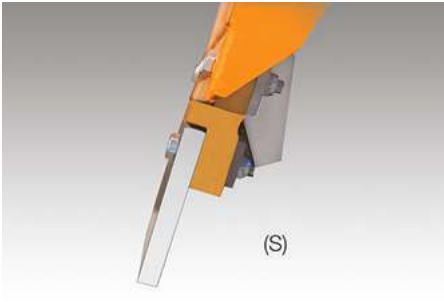
A more durable cutting edge made of steel, rubber and ceramic. This cutting edge is meant for aggressive snow clearing and can be a good alternative if the steel cutting edge is wearing out too fast. The combination of materials ensures noise and vibration reduction.

#### TUCA SX cutting edge

A state-of-the-art, high performance cutting edge designed for long-term use. The patented Küper Wave Technology uses a curved profile to remove snow without resistance. Separate tungsten holders embedded in rubber and vulcanized between front and rear Hardox 400 steel plate make the TUCA SX incredibly durable.

#### GK 5 cutting edge (GK 7)

A GK cutting edge allows for more efficient snow slush clearing with longer service life and less friction. This cutting edge is made of steel, rubber and corundum and is therefore more aggressive than a rubber cutting edge.



### Lifting device

A three-link lifting device ensures optimum power transmission to the carrier vehicle and tension-free lifting and lowering of the snow plough. This enables to gain big lifting height and it is easy to operate.

### Angling system

The adaptation system of the folding angle enables snow clearing from the base plough at various angles. Angle sensors prevent a collision with the vehicle when swinging to the left.

### Hydraulic collision protection

A hydraulic collision safety device for the extension blade is built into the valve block as standard equipment and prevents overloading of the side blade. All functions are performed via the optimised hydraulic block.

### Working support devices

#### Castor wheels

The infinitely height-adjustable castor wheels with optional splash guards ensure precise adjustment of the snow plough and provide appropriate aggressiveness during snow clearing. They support the frame when driving over obstacles and extend the service life of the cutting edge.

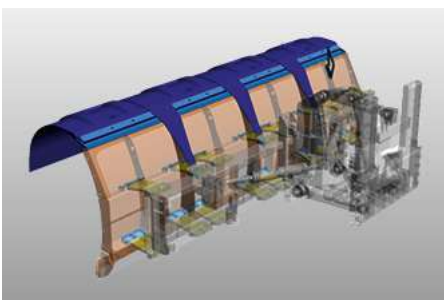
#### Sliding shoes

Alternatively, maintenance-free height-adjustable sliding shoes can be fitted. They are made of highly wear-resistant steel or combi.

### Snow deflector

The Tarron HP may be equipped with the following snow guards:

1. A polyurethane snow guard, which protects against moist and heavy snow



## Kerb deflectors

The side deflectors help keep the plough from scraping against kerbs and edges when clearing in urban areas.

## Mounting

The mounting device is height-adjustable, so Tarron series ploughs can be positioned correctly on different vehicle mounting plates.

## Options

- Warning marks, warning flags or LumiFog
- LED marker lights

## Related products

### Tarron HP-2W

Snow plough



### Stratos 4.0 - 12.0 m<sup>3</sup>

Spreader





Trust in our many years of uniquely diverse experience. **Get in touch with us.** We'll find the right solution for your specific challenge.

## Technical data

### Construction

|                  |   |
|------------------|---|
| Number of blades | 4 |
|------------------|---|

### Dimensions

|                                       |  |
|---------------------------------------|--|
| Plough height with polyurethane cover | 1,076 mm   |
| Length at cutting edge                | 5,200 mm   |
| Clearing width                        | 4,415 mm when plough is swivelled to the right and side blade is folded out<br>3,307 mm when plough is swivelled to the right and side blade is folded in<br>3,695 mm when plough is swivelled to the left and side blade is folded in |

### Weights

|   |          |
|---|----------|
| Approx. weight with steel cutting edges | 1,320 kg |
|---|----------|



© Aebi Schmidt Group  
[www.aebi-schmidt.com](http://www.aebi-schmidt.com)

Aebi Schmidt Holding AG  
CH-8050 Zurich, Switzerland

All rights reserved. Technical data is subject to change.  
Illustrations are not binding. Errors and amendments excepted.

Document created on 19 APR 2024

