

Used machines offer

Wasa 300+

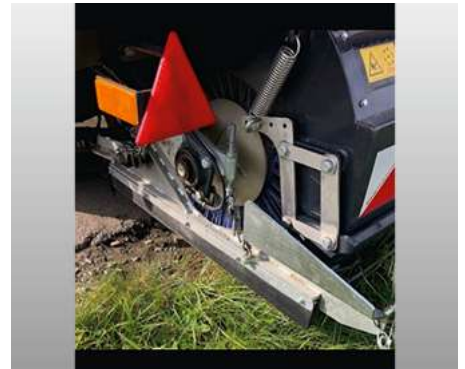
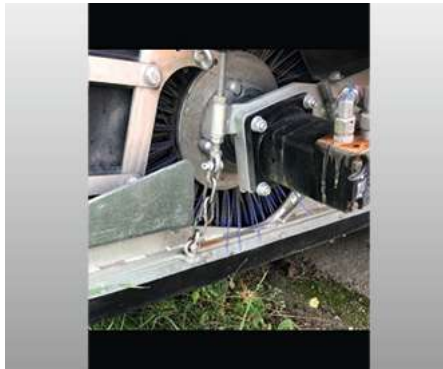
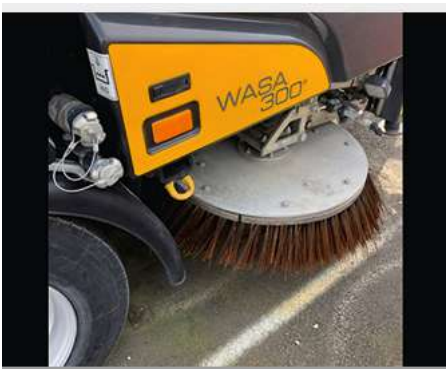
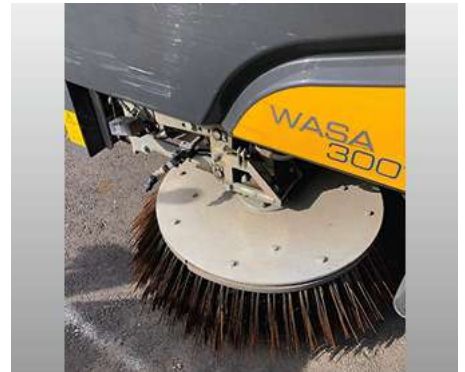
Offer number: UM0002116

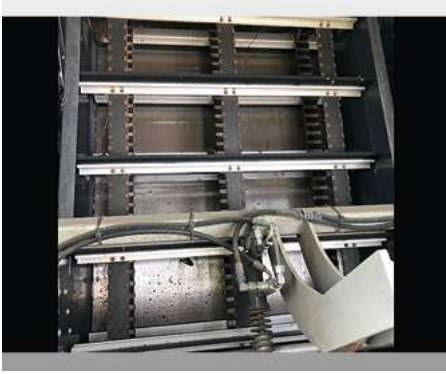


Brand:	schmidt
Mat.-Nr.:	1323050-4
Year of manufacture:	10/2016
Serialnumber:	WSVS20TW1H0000148
Running hours:	15 h
Mileage:	-
Condition:	Class 4
Location:	596 34 Skänninge Sweden
Availability:	-
Price:	48,000 EUR

The offered machine will be in good condition with low working hours.
Used as a demo machine for customer and exhibitions.

Gallery





Equipment

Please note that the language of the equipment description below may differ from English. If you have any questions, please reach out to the responsible contact.

Basic Data	
395254	WASA 300+ 25 kph, with hydraulical single circuit brake system (no homologation)
Carrier vehicle adaption	
592596	Drawbar coupling at the bottom; coupling height approx. 390mm (+-55mm)
556152	Drawbar hydraulically slewable left and right side (600-700mm)
809191	Drawbar eye Hitch ring D50 turnable (load 2.000kg)
Drive/engine	
809187	Drive via vehicle PTO shaft 1 3/8" (540 rpm)
Sweeping/suction unit	
988155 Disc brush material	Steel
755134 Roller brush material	Plastic (Poly) (Ø800x1150mm)
444033	Work lights (LED) for disc brushes
378868	Inclination adjustment hydraulically for RH disc brush
599311	Debris flap function for elevator (elevator lifting)
492589	Beacon (12V) (central mounted on top of the machine)
Water system	
993844	Central water tank filling on right hand side with Storz C52 coupling
Hopper options	
935942	Bigger dirt water drain sheet (stainlees steel) at the side wall of the hopper
Control/monitoring systems	
898103	Rear view TFT monitoring system coloured (Wasa+)
Ligthing / Warning devices / Safety devices	
193344	12V lighting (lighting cable with 7-pin plug)
330448	12V supply voltage (from towing vehicle)
Painting/corrosion protecting	
11301	Standard paint finish RAL 1007 yellow (Wasa300+)
Other extras	
653249	Mudguards (necessary for road approval)
338592	Lubrication points elevator outside on a central lubrication strip
276299	Self cleaning device for elevator (spray bar with water connection point)
919984	Manual hopper saftey prop (for tipped hopper)
817262	Control panel suction foot mount - to mount control panel on glass
SSR	Wasa013 1243774-9 Central lubrication system, version Lincoln

Contact

Max Dolsdorf
 Sales Manager Used Machines
 Mobile: +41 79 821 39 92
 Phone: +41 44 308 58 81
 E-Mail: Max.Dolsdorf@aebi-schmidt.com



www.aebi-schmidt.com
© Aebi Schmidt Group
Aebi Schmidt Holding AG
CH-8050 Zurich

All rights reserved. Technical data is subject to change. Illustrations are not binding. Errors and amendments excepted.

Document created on 7 Apr 2021

